



# Instructions for connecting a touch panel

## Table of contents

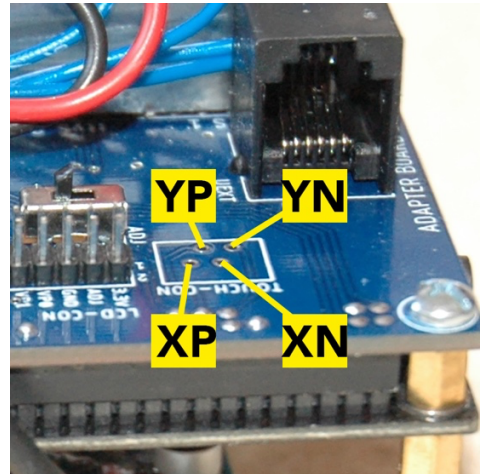
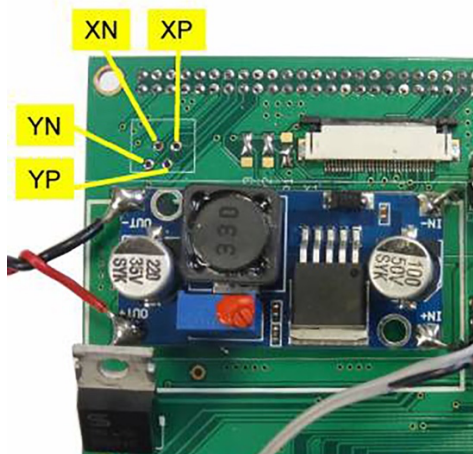
I.	General.....	2
II.	Dupont connector.....	2
III.	Connector for the foil cable.....	3
IV.	Final settings.....	4

## I. General

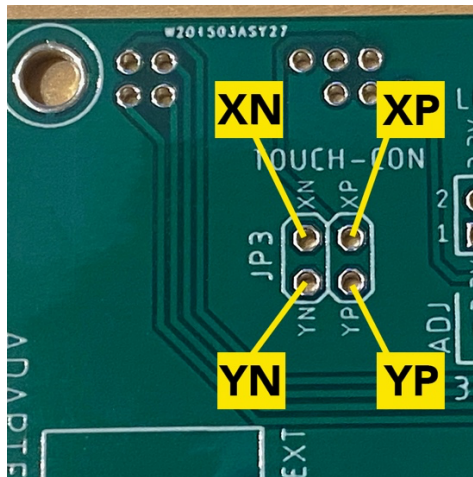
The touch panel is simply placed in front of the screen and the ribbon cable is routed inwards. You would have to keep in mind that the panel adds about 1.5mm thickness to the entire screen. It is therefore necessary that you either get a new frame or use an extension ring to increase the frame by the thickness of the touch panel. I recommend sticking the touch panel to the display with narrow strips of double-sided carpet tape. The ribbon cable is usually too short and you have to build a connection cable. For this you need a suitable plug for the ribbon cable, e.g. from my shop, and a 2x2 Dupont plug (female) with cables, or 2 pieces of 2x1 Dupont plugs (female) with about 10cm long cables. Which Dupont connector (female) you need depends on the version of your adapter board. Always make sure that the touch panel fits into the frame without tension. Otherwise there will be disturbances later. It may be necessary to create space in the display frame, especially with the 5.7-inch Texim display. This touch panel is about 0.6mm wider than the display.

## II. Dupont connector

The two following figures show the versions of the adapter board that require the two 2x1 Dupont connectors (female). First, two 2x1 pin headers must be soldered onto the board if they are not already present.



The version of the circuit board that you can buy in the FreeVario.de shop uses a 2x2 Dupont connector (female), which makes it much easier to plug in without errors. If not already present, a 2x2 pin header must be soldered onto the board.



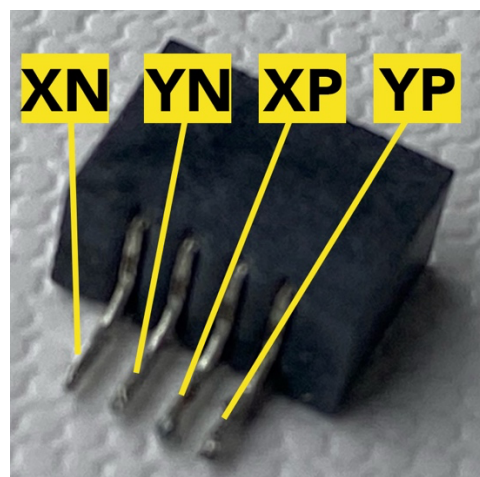
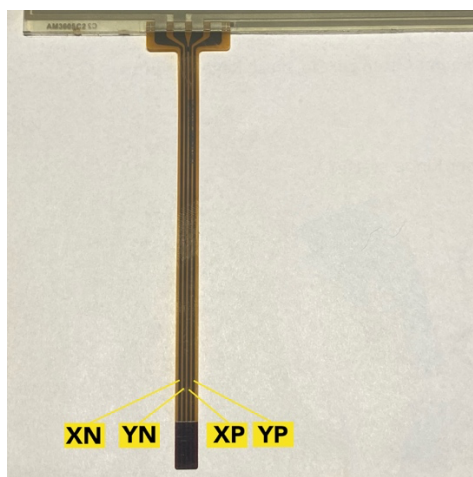
### III. Connector for the foil cable

The ribbon cable must be plugged into the connector in such a way that the contacts of the cable and the soldering lugs of the connector are pointing downwards. Then the PIN-Out shown in the pictures is correct. Otherwise the PINs are mixed up and the touch will not work correctly!

To build the cable, first cut 4 shrink tubes that are as thin as possible and push them over the 4 cables. They are later used to safely insulate the connections on the plug from each other. Correctly solder the PINs of the Dupont connector (female) to the PINs of the connector for the ribbon cable:

XP -> XP  
 XN -> XN  
 YP -> YP  
 YN -> YN

Slide the heat-shrink tubing over the soldered cables and shrink them together with a heat gun.



#### **IV. Final settings**

After everything is correctly connected, switch on the OpenVario and select "Calibrate Touch" from the menu. Click the crosshairs as centrally as possible 5 times. After the calibration is complete, the touch screen can be used.